



## Screen Designer

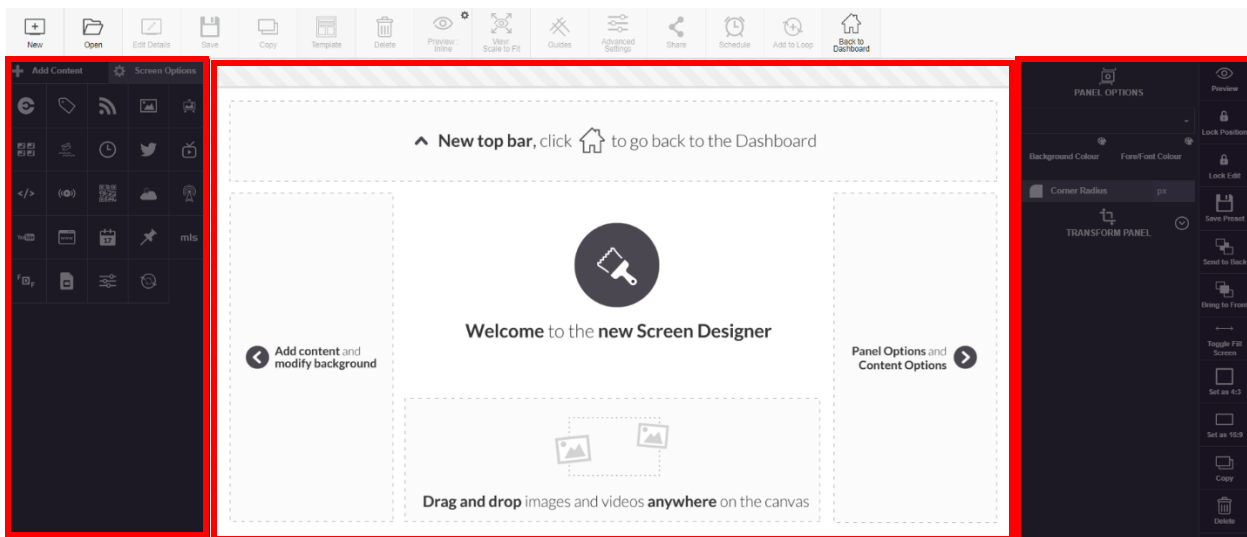
The Planet eStream Screen Designer is where you will design most of your digital signage content.

### Step 1: Accessing the Screen Designer

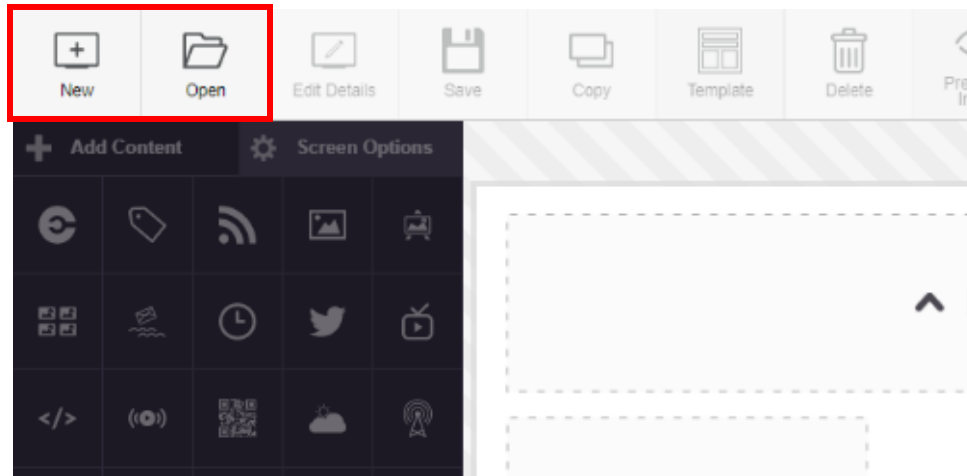
Select Screen Designer in the top navigation bar and a new page will open.



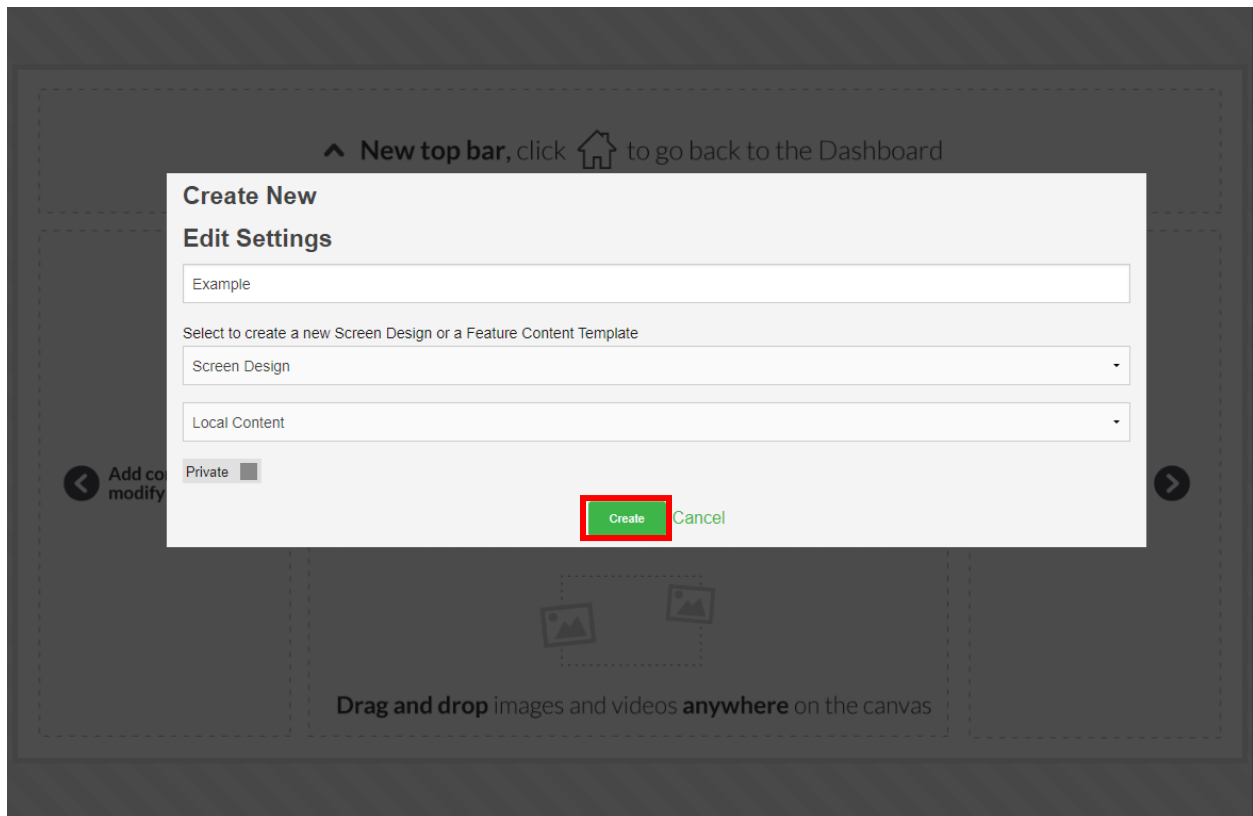
The best way to think of this page is in three sections, left to right, disregarding the top toolbar for now. The left-hand side is where you will find the assets to be added to your signage, in the middle you have your new screen design, effectively a blank canvas and on the right hand side is where you can define the attributes for the assets that you add.



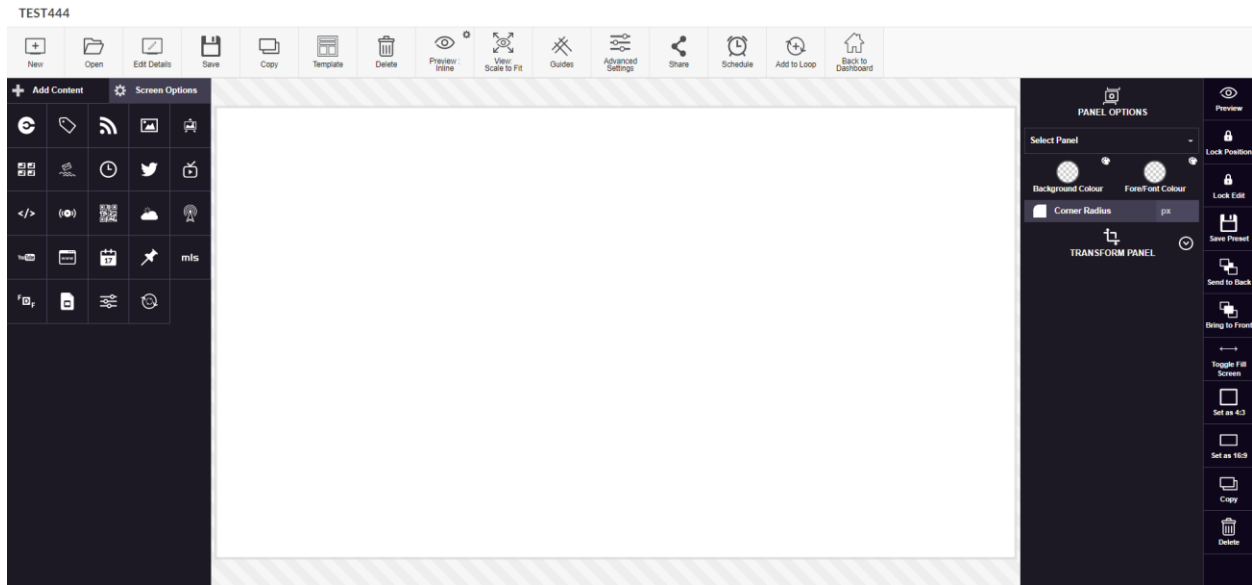
To create a new Screen Design select **New** and to open an existing screen design select **Open**.



When creating a new Screen Design add a name, select a Publishing Policy and set the privacy setting. Then click **Create**.



You can now start adding signage assets from the left-hand side to the screen design.



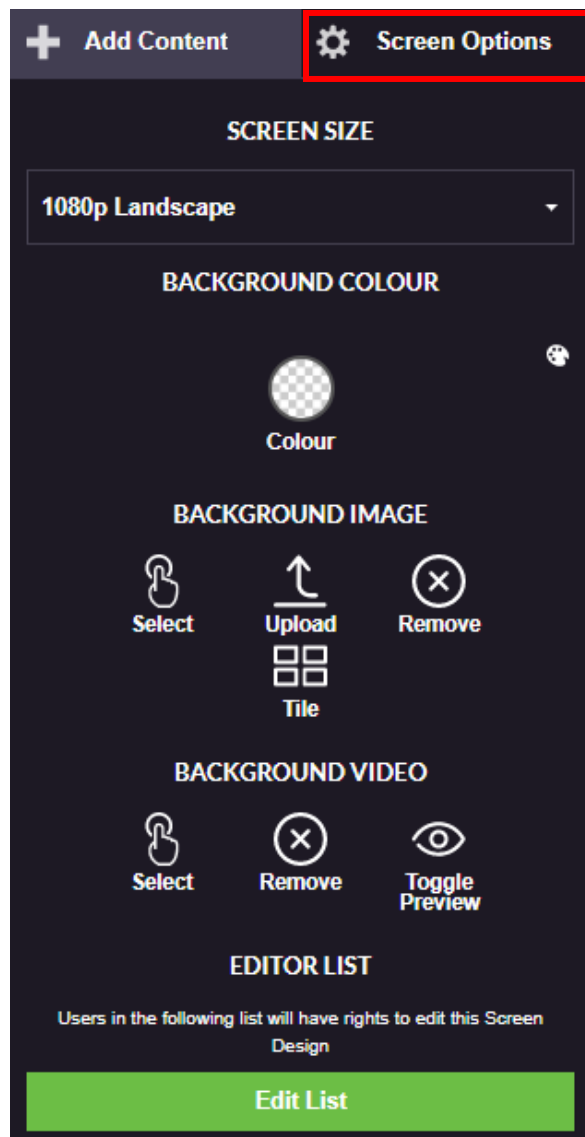
## Step 2: Background Options

The first thing you may want to do is specify some background options. On the left-hand side you can toggle to **Screen Options**, where you can see some additional options. Firstly, you can change the size or orientation of your screen.

Once you have done this you can add a background colour, image or video.

To modify the background colour, use the colour picker or specify a colour value either in hex, RGBA or RGB. You may want to do this to follow your institution's brand guidelines.

To add background images or videos, click **Select** and search for any content that you already have on your eStream system, you're also able to simply drag and drop content onto the Screen Designer. For instance, you may have an image that you want to use as a background image and you can drag this from your desktop where you are presented with two options; one to set as background and another to create new panel.

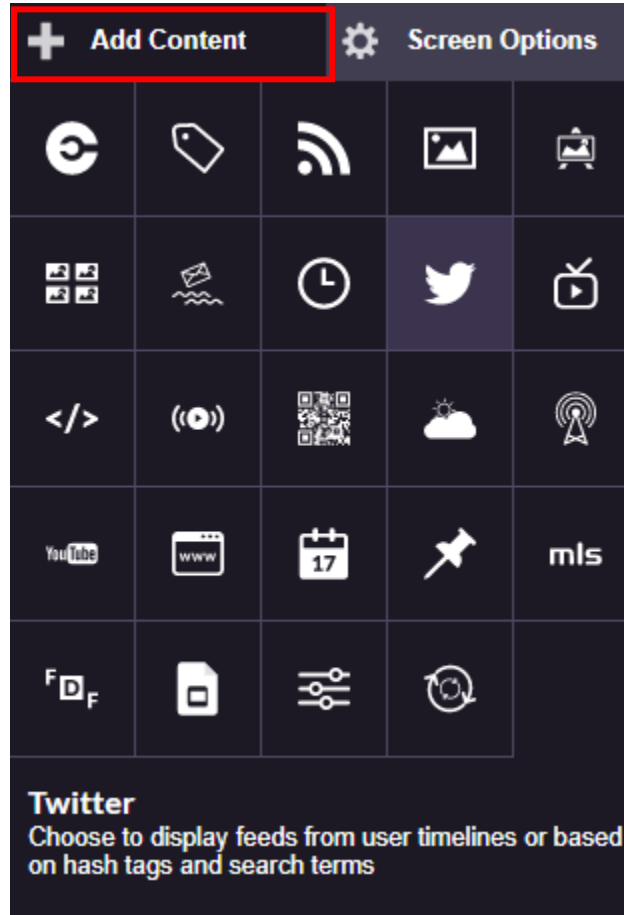


### Step 3: Adding Content

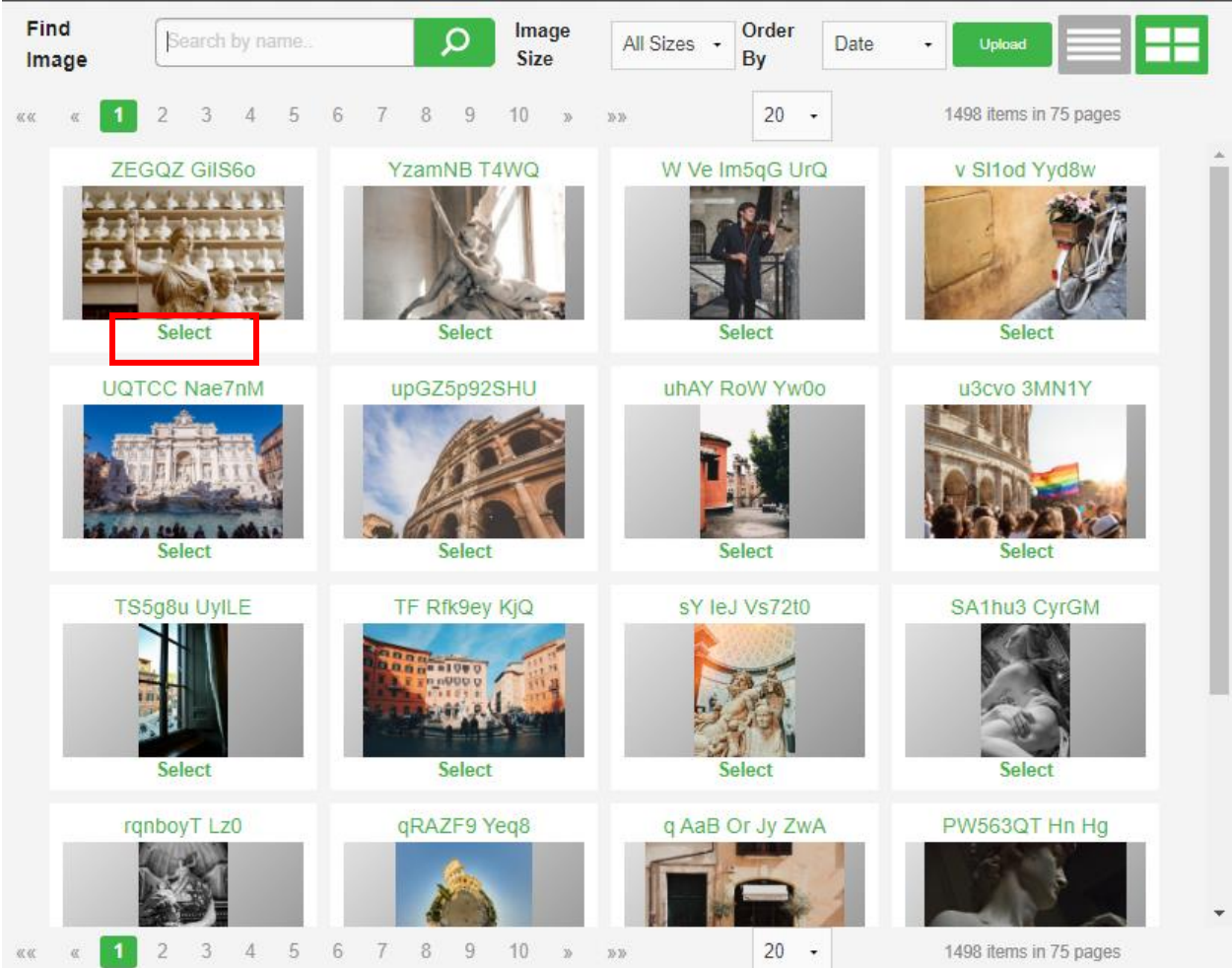
You can add various types of content by switching back to **Add Content** on the left-hand side of your screen.

Underneath this are all the different options you have for content including video content from your eStream site, as well as things like labels, RSS feeds, images and Twitter feed.

Additionally, Planet eStream integrates with a range of third-party educational products such as iSAMS and MLS Eclipse and Junior Librarian.



You can start adding content to your Screen Design by selecting any of these items. As an example, you may want to add content from your Planet eStream Photo Library. To do this select photo albums and to search for content. Then use **Select** to add the content to your Screen Design.



You can also add images and videos in the same way you can with the background images, by dragging and dropping content onto the canvas for your signage.

If you add a video in this way it will get converted by the eStream system and be made available soon after. In the meantime, an 'available soon' thumbnail will be displayed.

You're also able to drag and drop PowerPoint documents onto the system and each slide will be extracted to be displayed as a slideshow.

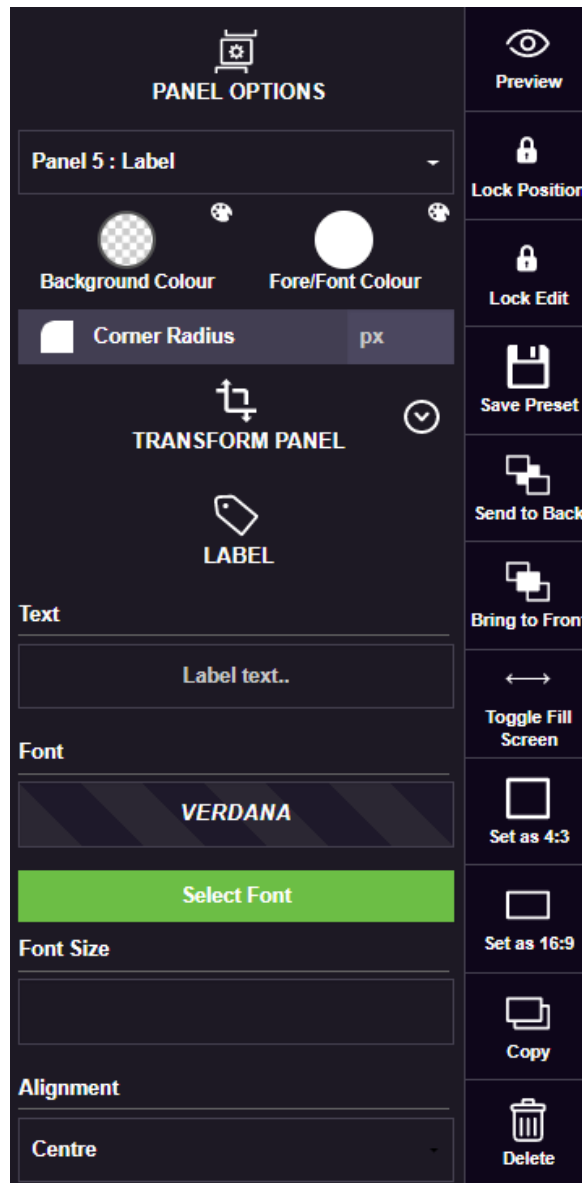
## Step 4: Panel Options

On the right-hand side of your designer you have the panel options, where you can define the attributes for your individual panels.

Each panel will have a different series of attributes that can be modified. In example of a label content panel below, you are given options to change the text, fonts and alignment. When selecting fonts for any of your panel options you're given the options to use built-in fonts, which are standard Windows fonts, or also any font that's available as a Google web font.

Also, on the right-hand side you are able to preview individual panels, lock the position and lock editing, save each panel as a pre-set and position the panel in a relevant place on the screen.

If you save the panel as a pre-set, it means you can use this again subsequent screen designs without requirement to create the panel again from scratch.



## Step 5: Options and Scheduling

The options at the top are generally used when you have finished designing your content and include save as a template, preview the entire screen and share a link.

Once you've designed your screen you can then simply display it by adding it as the default content on the individual signage players, the default content on a zone or by scheduling it using the various scheduling options within Planet eStream digital signage.

You can do this directly from the Screen Designer by selecting **Schedule**.

