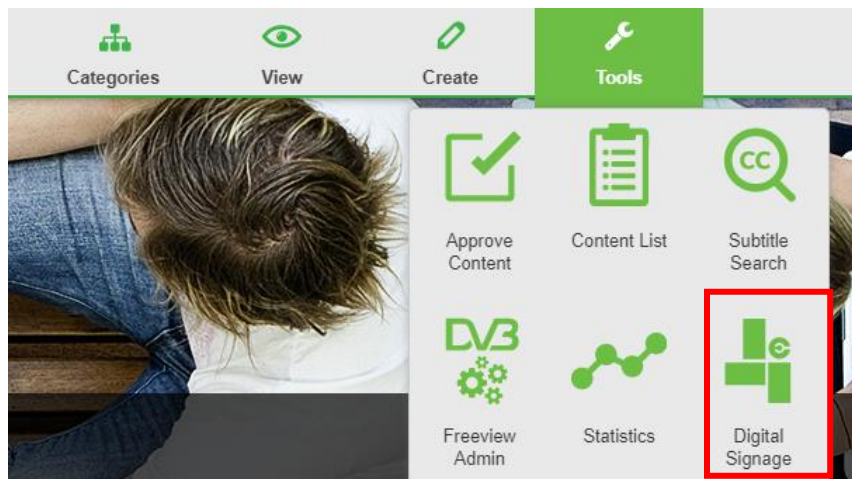


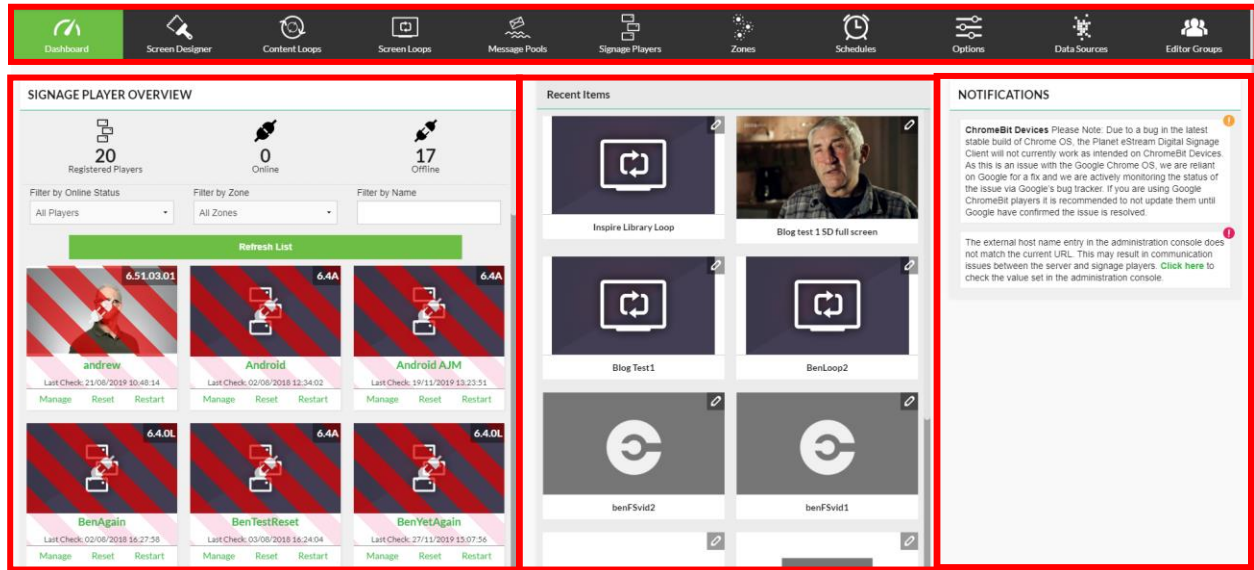


## The Signage Dashboard

The Signage Dashboard in Planet eStream is effectively the homepage for your digital signage and will give you Key information about the digital signage module. You can access this area by navigating to **Tools > Digital Signage**.

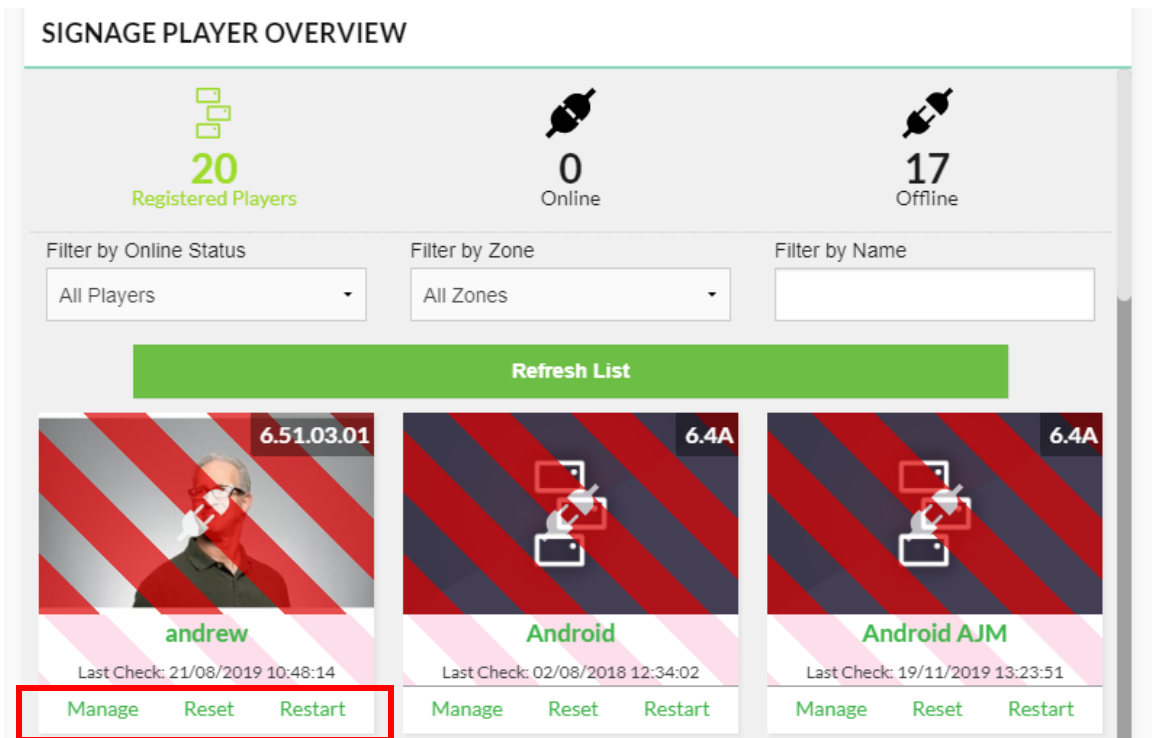


Here is an example of the Dashboard. The top navigation for all of the Digital Signage functionality is at the top and then the rest of the Dashboard is separated in three sections; **Signage Player Overview**, **Recent Items** and **Notifications**.



**Signage Player Overview** gives you an overview of your Digital Signage Players, which are the pieces of hardware connected to each of your screens. This are covered in more detail in the Signage Player guide.

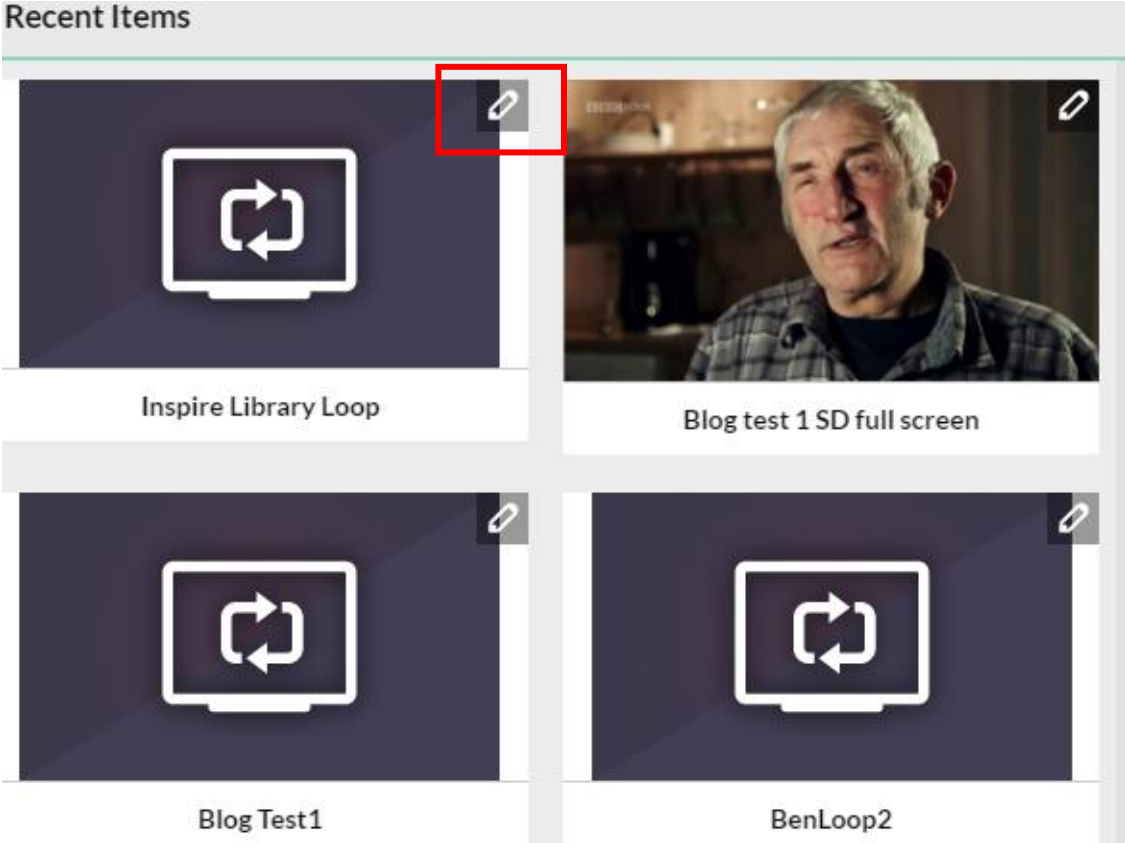
You can filter the overview by Online/ Offline players, Zones or Signage Player name and then Manage, Reset or Restart individual Signage Players.



In the middle of your Dashboard you can see **Recent Items**. This area will display recently created or modified Screen Designs, Screen Loops, Content Loops or Message pools that are relevant to you as a user.

Admins can see all recent items whereas members with restricted permissions to just edit certain content will only see those pools of content.

To modify a recent item, click on the pencil icon.



**Notifications** will be shown on the right-hand side. These could be notifications about new features, and potential error or any integrations that could be set up but haven't such as Twitter or Met Office APIs.

## NOTIFICATIONS

**ChromeBit Devices** Please Note: Due to a bug in the latest stable build of Chrome OS, the Planet eStream Digital Signage Client will not currently work as intended on ChromeBit Devices. As this is an issue with the Google Chrome OS, we are reliant on Google for a fix and we are actively monitoring the status of the issue via Google's bug tracker. If you are using Google ChromeBit players it is recommended to not update them until Google have confirmed the issue is resolved.

The external host name entry in the administration console does not match the current URL. This may result in communication issues between the server and signage players. [Click here](#) to check the value set in the administration console.

