



Blackboard

Planet eStream customers who use Blackboard as their VLE can take advantage of the seamless integration between the two platforms.

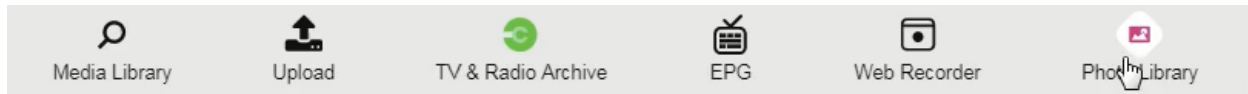
Step 1: Accessing the Plugin

You can access your Planet eStream content by going to a course on Blackboard and then navigating to Content. Select **Build Content** and then select **Planet eStream** from the list of Mashups.

The screenshot displays the Blackboard user interface. On the left is a dark sidebar with navigation options: 'Sample Course' (Home Page, Information, Content, Discussions, Groups, Tools, Help) and 'Course Management' (Control Panel, Content Collection, Course Tools, Evaluation, Grade Center, Users and Groups). The main content area is titled 'Content' and has a sub-menu with 'Build Content', 'Assessments', 'Tools', and 'Partner Content'. The 'Build Content' dropdown menu is open, showing two columns of options. The 'Planet eStream' option is highlighted with a red rectangular box. Other options include 'Create' (Item, File, Audio, Image, Video, Web Link, Learning Module, Lesson Plan, Syllabus, Course Link, Content Package (SCORM)), 'New Page' (Content Folder, Module Page, Blank Page), and 'Mashups' (Flickr Photo, SlideShare Presentation, YouTube Video, Blackboard Open Content).

Step 2: Accessing Content

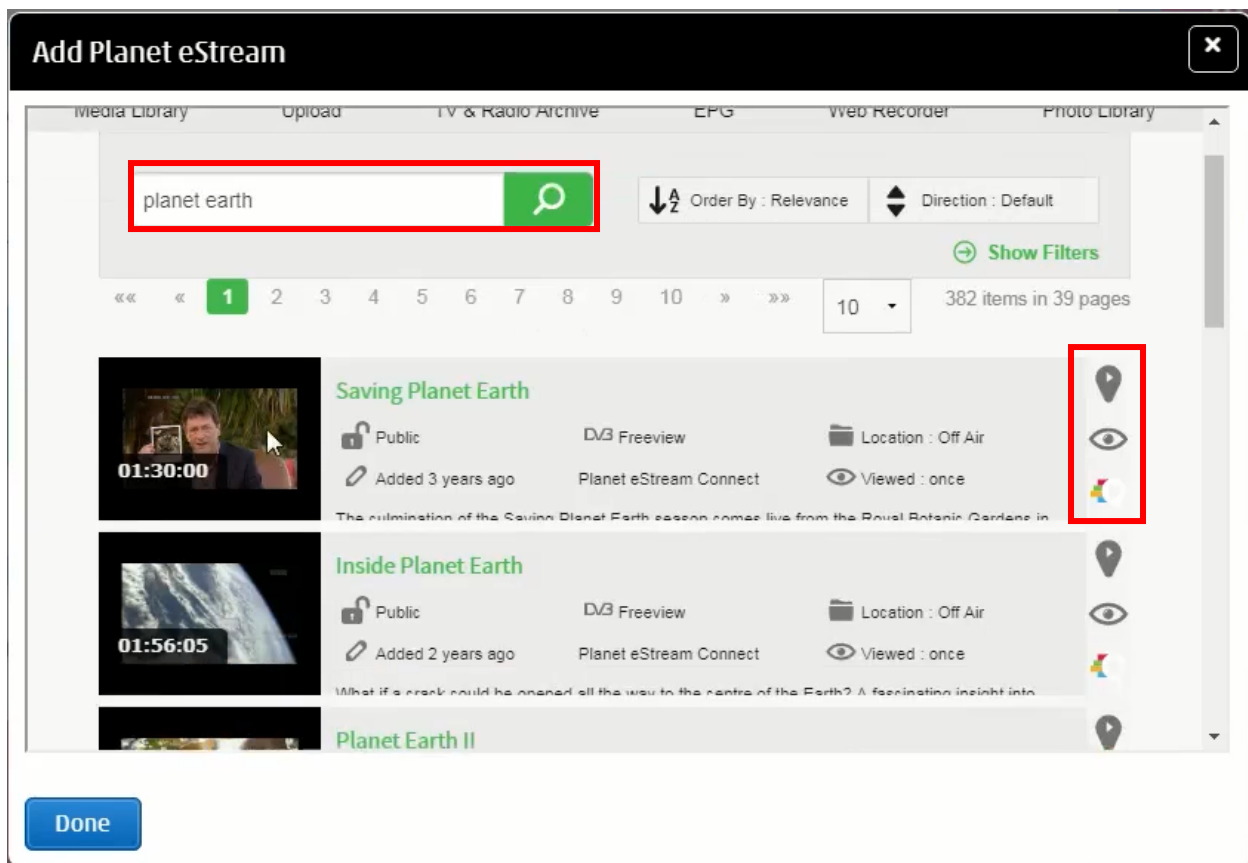
The Planet eStream plugin provides several options to either add content to eStream via Blackboard or pull existing eStream content in for sharing on a Blackboard page. These options are shown along the top and they will be related to your permissions within Planet eStream and any modules that your organisation subscribes to.



Media Library

The first option you have is to search your Planet eStream Media Library for video content within eStream that you want to share with Blackboard. Enter your search terms in the search bar and use the magnifying glass icon to search for content. You can filter your search to show different types of content should you wish. If you do a search for a specific piece of media, it will return all the results that match your search; you then have a few options.

You can select the entire video by clicking on the thumbnail. If you want to preview this use the Eye icon, then click **Select Item**. You can also select any chapters from within that video or clip. Finally, you can embed quiz timelines from that clip.



Click **Add to Blackboard** to add to your Blackboard course page.

Planet eStream ×

moon ↓ Order By: Relevance ↕ Direction: Default Show Filters

1 Pages

01:00:00

01:00:00


01:00:00

01:00:00

00:00

Horizon: 40 Years on the Moon 01:00:00

Brian Cox uses the BBC archive to examine the story of man's relationship with the moon, from James Burke testing out Nasa equipment to Neil Armstrong's giant leap for mankind. [S]

 **Add to Canvas**

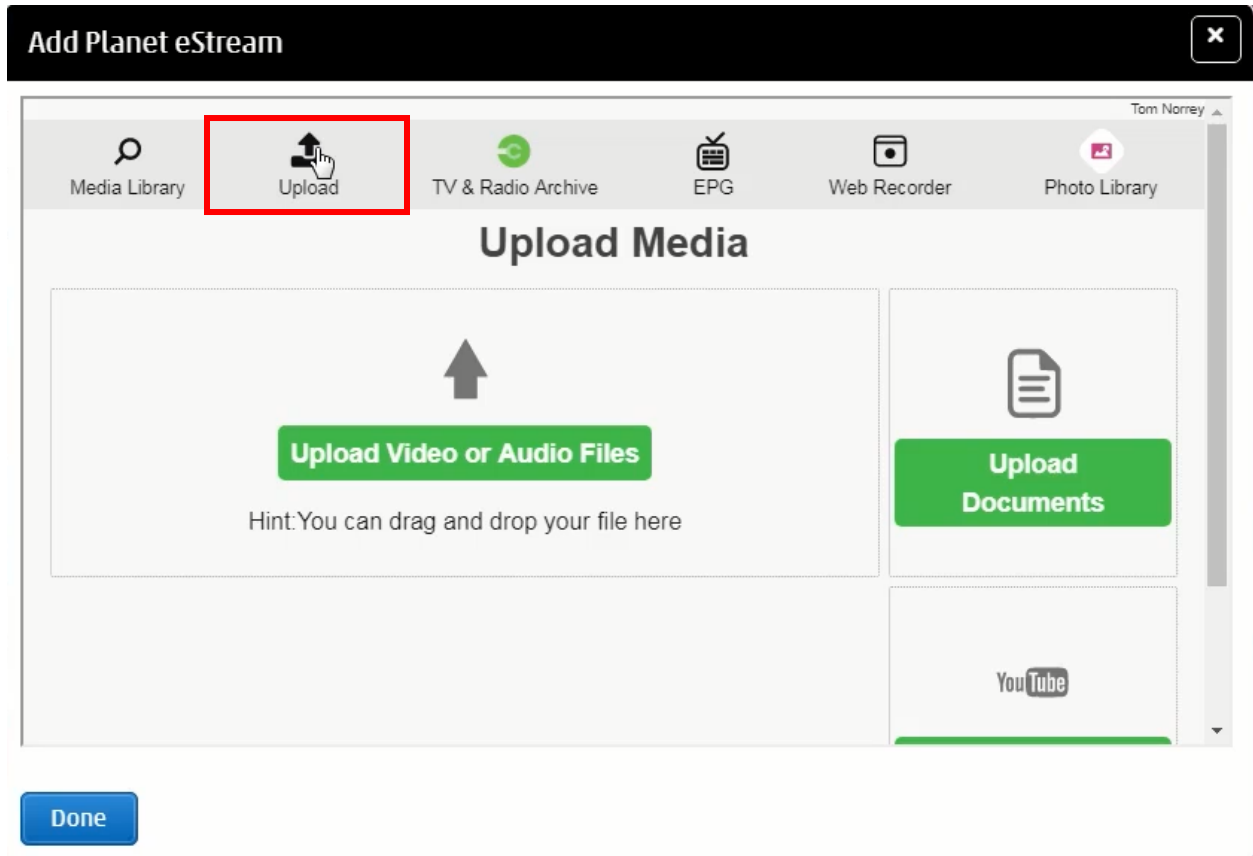
More Learning Tools from Blackboard

Uploading Video Content

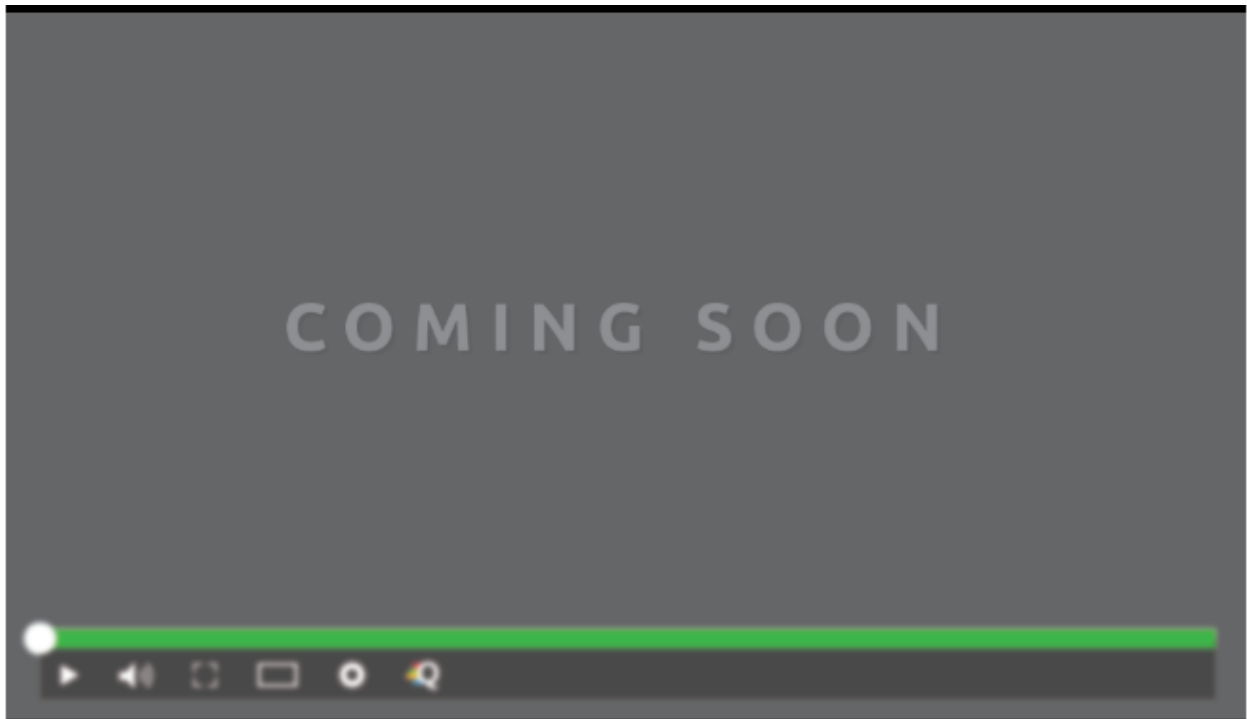
You can upload content to your Planet eStream system via Blackboard. Once the video has been converted by Planet eStream it will be available to view in eStream and automatically embedded on the Blackboard page.

You can upload video or audio files, documents or YouTube embeds in the same way as you can through the eStream interface.

Select **Upload** from the plugin options and then upload your media following the same steps as uploading directly into Planet eStream.



While the video is converting, you'll see a placeholder on Blackboard that will say 'this video will be available soon' and once that's done the video will be automatically embedded into Blackboard and uploaded to eStream.



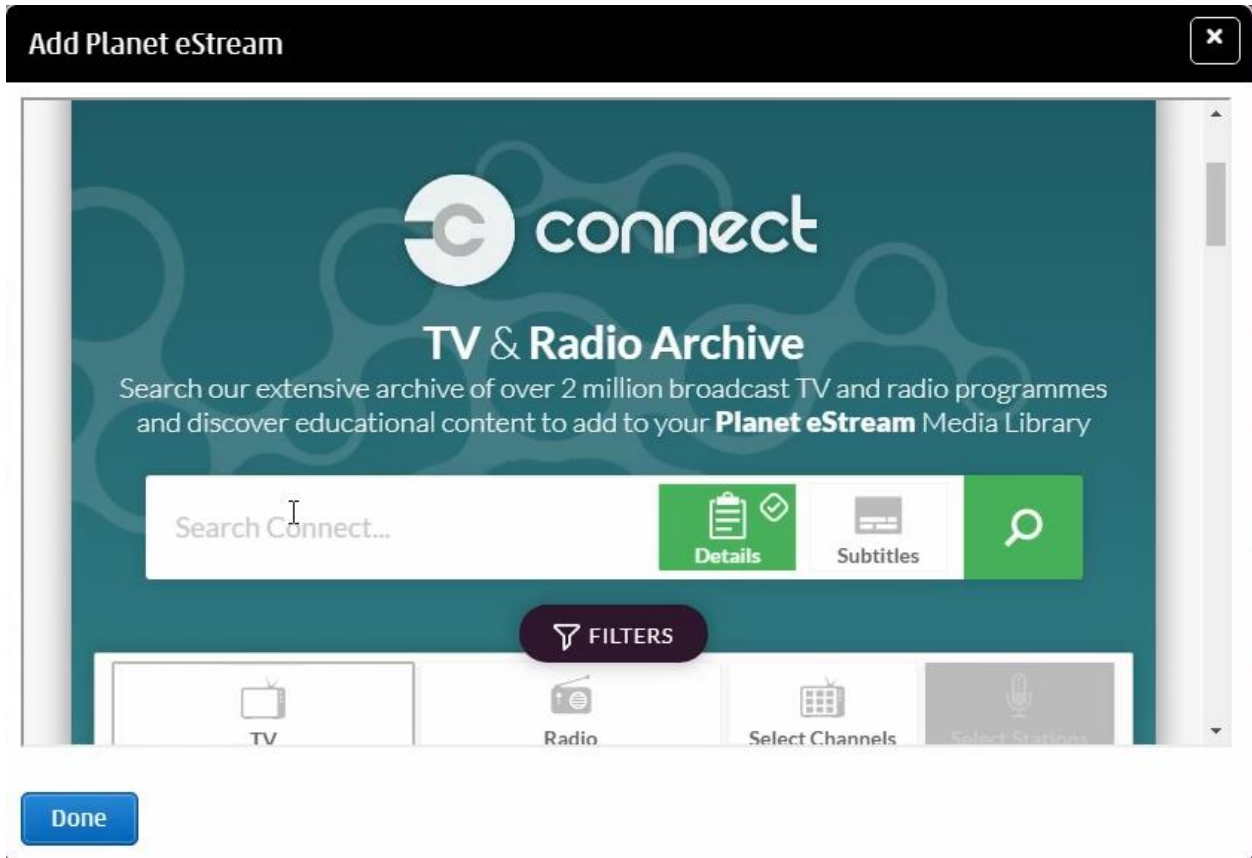
TV & Radio Archive Content

You can search Connect directly via Blackboard and import from the archive into Planet eStream.

To do this select **TV and Radio Archive**.



You can then search connect and add content. When you add this content via Blackboard it will automatically add it to your eStream site, and you'll see a placeholder while the content is being converted.

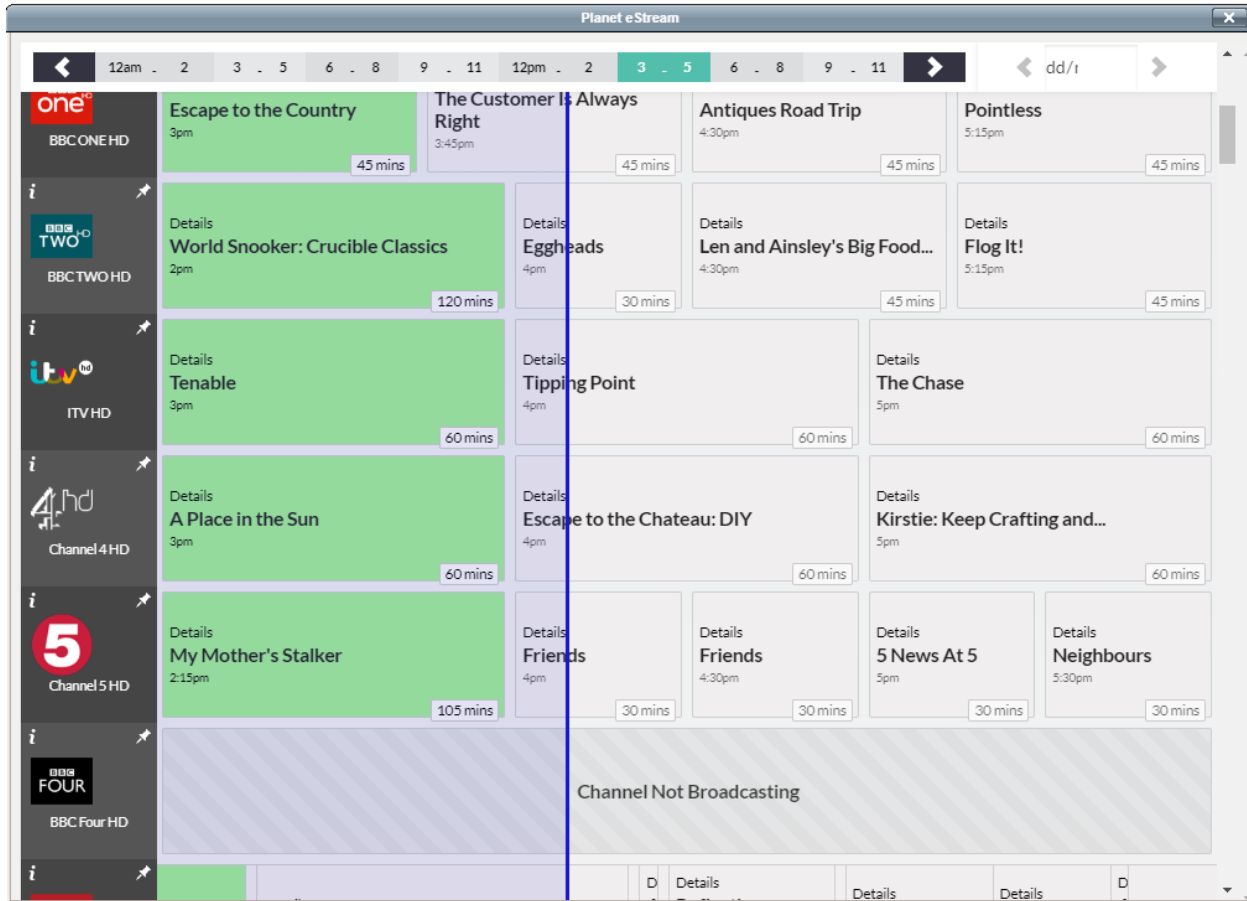


Recording TV and Radio Using the EPG

You can use the Planet eStream EPG via Blackboard in the same way that you would directly in Planet eStream by selecting **EPG**.



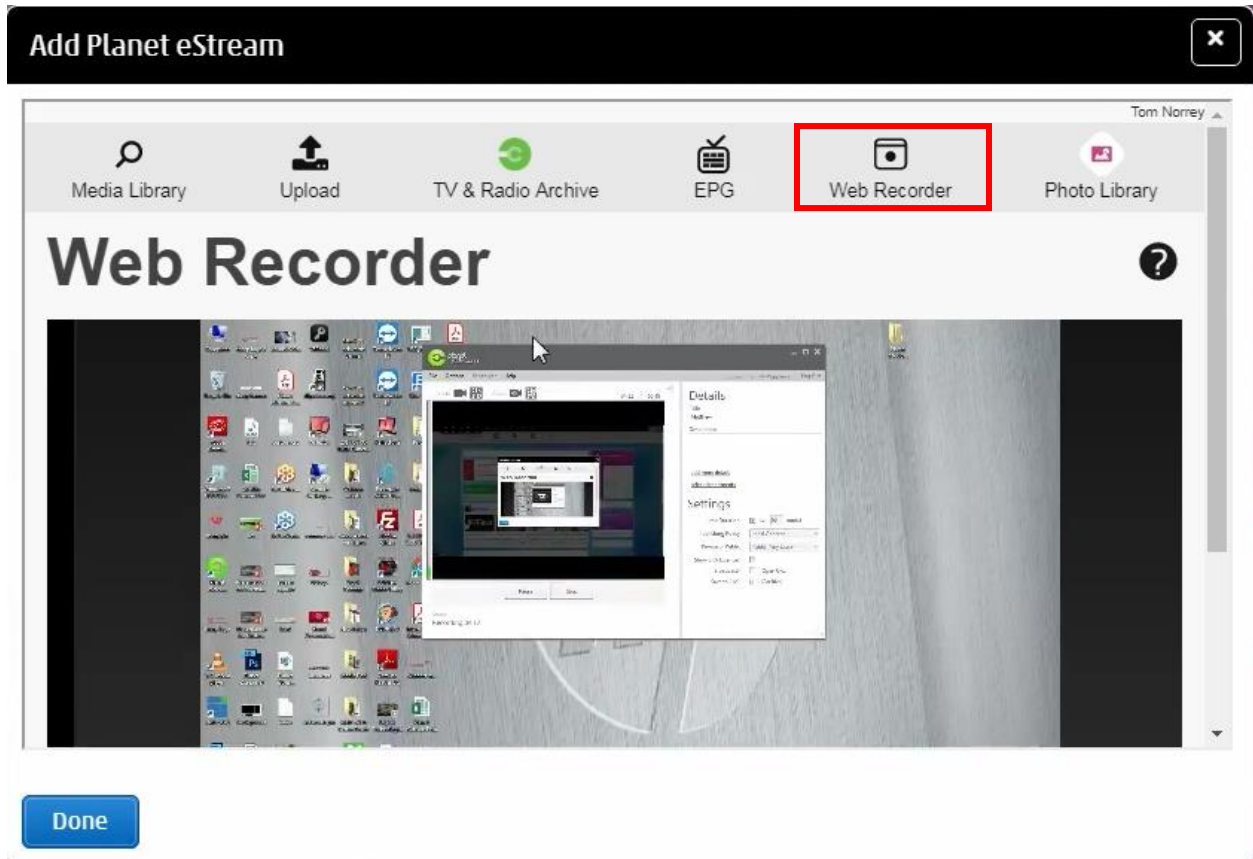
Select a programme to record it and once it has been added to Planet eStream it will automatically be embedded into the Blackboard course page. In the interim a placeholder will be shown.



Web Recorder

Select **Web Recorder** to launch the Web Recorder directly within Blackboard. The Web Recorder allows you to capture live sources directly within the browser, which you can do directly within Blackboard when using the eStream plugin.

It works in the same way as the web recorder within the main Planet eStream system. Click on the cog icon to change sources or turn on picture-in-picture mode.

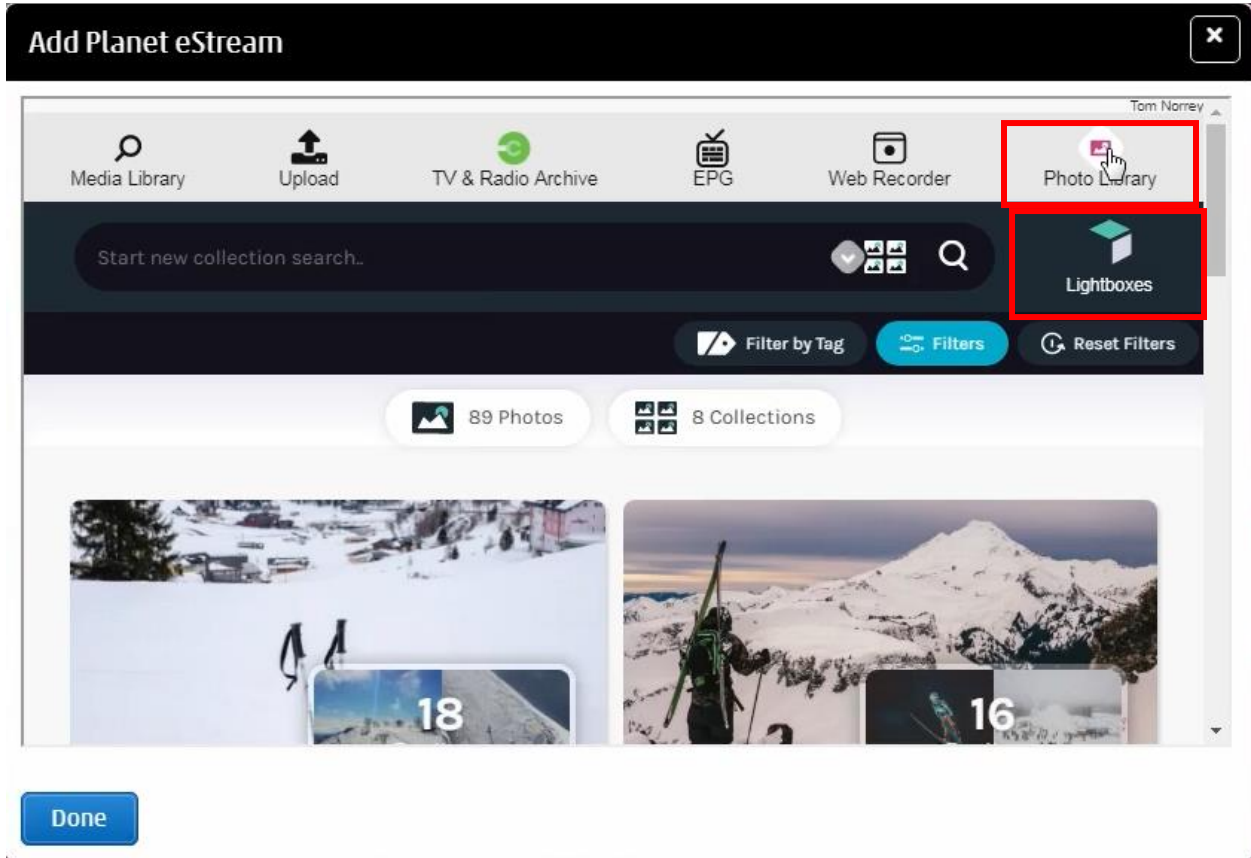


Once you have finished recording, a placeholder will be added to the Blackboard page while the video is processed.

Photo Library

The final option you have is to access content from the Planet eStream Photo Library.

Select **Photo Library** to access this and you will be presented with any Collection that you've recently created. You can also search any Collection that you might have created and use the drop-down to switch between searching for individual items or collections.



The plugin will also show and Lightboxes that you have created or are a contributor to. Select **Lightboxes** to view these.

